

## Map of the wider Asahikawa Area



The premium service may only be used once at one location.

## Locations Providing Premium Services (Map of the wider Asahikawa Area)

<Enlarged view of the city> is also available.

### Japanese cuisine



#### 1 Sobasen: Traditional Soba Noodles in Sensho-en Ryokan

Takasagodai 3-chome 8-3, Asahikawa  
Tel.0166-61-5154  
Closed:Monday; open if Monday is a national holiday, closed on Tuesday during the week when Monday is open.

**Premium services** A complimentary cup of handmade oshiruko for those who dine

### Western cuisine



#### 2 No-Ca-Ya

Higashi Asahikawacho Kami Heison 384-banchi, Asahikawa  
Tel.080-9619-6942  
Closed:Year-end and New Year holidays

**Premium services** Order curry and get one free drink of your choice (under 450 yen)



#### 3 KING BEAR NOW

Higashikawacho Minamicho 1-Chome 5-6, Kamikawagun  
Tel.0166-73-8812  
Closed:Open all year around

**Premium services** One free soft drink

### Ramen noodles



#### 4 Baikohken (Asahikawa Airport Restaurant)

Asahikawa Airport 2F, Higashi Kaguracho Higashi 2-sen 16-98, Kamikawagun  
Tel.0166-73-9003  
Closed:Open all year around

**Premium services** Egg or large serving per person

※When using premium services, please hand over your Omotenashi Pass or Combo Ticket stub.  
※If you wish to use the premium service before using the admission or use ticket, a check will be made on the back of the ticket stub.

### Museum



#### 5 Hokkaido Asahikawa Museum of Art

Tokiwa Park, Asahikawa  
Tel.0166-25-2577  
Closed: Mondays

**Premium services** Admission to Exhibition Room 1(special exhibition): Applicable for group discount admission rate



#### 6 Asahikawa Museum of Sculpture

Shunko 5-jo 7-chome, Asahikawa  
Tel.0166-46-6277  
Closed: Mondays

**Premium services** Discount on general admission ¥450 → ¥400, student admission (age 16 to 18) ¥300 → ¥270, admission free for under 16



#### 7 Yasushi Inoue Memorial Museum

Shunko 5-jo 7-chome, Asahikawa  
Tel.0166-51-1188  
Closed: Mondays

**Premium services** Discount on general admission ¥300 → ¥270, student admission (age 16 to 18) ¥150 → ¥130, admission free for under 16



#### 8 Asahikawa Science Center Sci-Pal

Miyamae 1-jo 3-chome 3-32, Asahikawa Tel.0166-31-3186  
Closed: Mondays and the last day of each month

**Premium services** [Permanent Exhibition] Discount on adult admission ¥410 → ¥360, student admission (age 16 to 18) ¥280 → ¥250, admission free for under 16 [Planetarium] Discount on adult admission ¥330 → ¥290, student admission (age 16 to 18) ¥220 → ¥190 [Permanent Exhibition & Planetarium] Discount on adult admission ¥520 → ¥460, student admission (age 16 to 18) ¥350 → ¥310



#### 9 Asahikawa City Museum

Kagura 3-jo 7-chome, Asahikawa Tel.0166-69-2004  
Closed: Open from June to September.  
Otherwise, the 2nd and 4th Monday of the month

**Premium services** Discount on general admission ¥350 → ¥310, student admission (age 16 to 18) ¥230 → ¥200, admission free for under 16



#### 10 Asahikawa Heison Memorial Museum

Higashi Asahikawa Minami 1-jo 6-chome 3-26, Asahikawa  
Tel.0166-36-2323  
Closed: Tuesdays(closed every day during the winter season)

**Premium services** Discount on general admission ¥500 → ¥400, student admission (age 16 to 18) ¥400 → ¥300, child admission (age 7 to 15) ¥200 → ¥100



#### 11 Kawamura Kaneto Ainu Museum

Hokumoncho 11-chome, Asahikawa Tel.0166-51-2461  
Closed: Open all year around

**Premium services** Discount on general admission ¥800 → ¥600, university student admission ¥600 → ¥500, student admission (age 13 to 18) ¥500 → ¥400, child admission (age 7 to 12) ¥300 → ¥250



#### 12 Ayako Miura Literature Museum

Kagura 7-jo 8-chome, Asahikawa Tel.0166-69-2626  
Closed: Open every day from June through October / Closed Mondays from November through May

**Premium services** Discount on general admission ¥700 → ¥600, university student admission ¥300 → ¥200, admission free under 19



#### 13 Tetsuro Nishikawa Literature Museum

7-jo-dori 8-chome 38-10, Asahikawa Tel.0166-25-8700  
Closed: Mondays, Tuesdays and Wednesdays (closed every day during the winter season)

**Premium services** Discount on general admission ¥500 → ¥400, university student admission ¥300 → ¥200

### Cafe



#### 14 Milk Stand Esperio

Asahikawa Airport 2F, Higashi Kaguracho Higashi 2-sen 16-98, Kamikawagun  
Tel.0166-73-6608  
Closed: Open all year around

**Premium services** Free upgrade from mini to regular soft serve ice cream



#### 15 Asahiya Conall Hanasaku Café

In front of the main gate of Asahiya Zoo, Higashi Asahikawacho Kuranuma 45-6, Asahikawa Tel.0166-36-4132  
Open: Mid-April to early November / Mid-November to early April (open daily during this period)

**Premium services** 10% discount



#### 16 Cafe good life

Higashi Asahikawacho Higashisakuragaoka 52-2, Asahikawa  
Tel.0166-85-7708  
Closed: Tuesday and Wednesday

**Premium services** Free cup of coffee or herbal tea for those who order a meal.



#### 17 NOW CAFE(Higashikawa Shop)

Higashikawacho Minamicho 1-Chome 5-6, Kamikawagun  
Tel.050-1188-9690  
Closed: No regular holidays, Open irregularly in winter

**Premium services** 1 topping free \*Fruits are not included

### Souvenirs & sweets



#### 18 Tsuboya (Nanakamado-kan Store)

Chuwa 5-jo 6-chome 5-3, Asahikawa  
Tel.0166-61-5182  
Closed: Irregular holidays

**Premium services** Free one sweet for those who purchase over 1,500 yen



#### 19 Tsuboya (Kibana no Mori Store)

Minami 6-jo-dori 19-chome, Asahikawa  
Tel.0166-39-1600  
Closed: Irregular holidays

**Premium services** Free one sweet for those who purchase over 1,500 yen



#### 20 Taniguchi Farm Shop: Fresh Produce from the Farm

Higashi Asahikawacho Kyoei 255, Asahikawa  
Tel.0166-38-6336  
Closed: May-October No closed days / November-April Closed on Sundays and holidays

**Premium services** ¥100 discount off the bill



#### 21 Kita-Kari Asahikawa Main Branch

Nagayama 3-jo 4-chome 1-5, Asahikawa  
Tel.0166-48-2144  
Closed: Year-end and New Year holidays

**Premium services** 3% OFF at checkout  
\*Some products are not eligible.

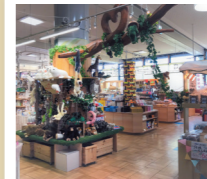


#### 22 Kita-Kari Higashi-Asahikawa Branch

Higashi Asahikawa minami 1-jo 6-chome 5-13, Asahikawa  
Tel.0166-64-6121  
Closed: Irregular holidays

**Premium services** 3% OFF at checkout  
\*Some products are not eligible.

### Souvenirs



#### 23 Mlchinoeki(Roadside Station) Asahikawa Store

Kagura 4-jo 6-chome 1-12, Asahikawa  
Tel.0166-74-7011  
Closed: Year-end and New Year holidays

**Premium services** 3% discount off the bill (Some items are excluded, such as postage stamps, alcoholic beverages and, special events.)



#### 24 Otokoyama Sake Brewery Museum

Nagayama 2-jo 7-chome 1-33, Asahikawa  
Tel.0166-47-7080  
Closed: Year-end and New Year holidays

**プレミアム特典** One pin badge of Otokoyama museum.



#### 25 Asahiya Zoo Central Shop "Zoo Shop"

Asahiya Zoo (Inside the Seal Pavilion), Higashi Asahikawacho Kuranuma, Asahikawa  
Tel.0166-36-4190 Closed: Same as Asahiya Zoo

**Premium services** 5% discount off the bill (Some items are excluded.)